

# Section 19

## ORIGINAL SPECS.

Engine Data

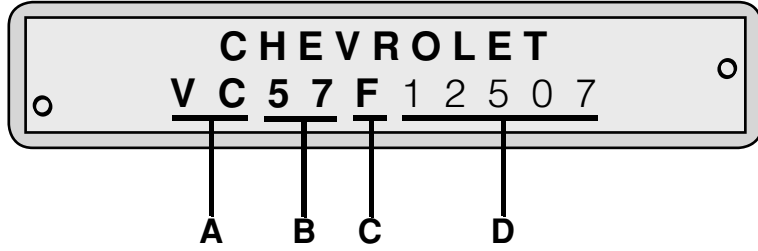
ID. Information

Cast Numbers

Engine Numbers

Interior Data

Paint Numbers



### THE VIN TAG

The stainless steel VIN tag is welded to the driver's door pillar post. Coded into this tag is the following information:

**A.** This part of the code may be either one or two letters. If two, the first letter will always be a "V". This indicates that the car has a V8 engine. The second letter will tell you the model series of the car. For model series identification, see below.

<u>6 Cylinder</u>	<u>8 Cylinder</u>
<b>A</b> 1500 (exc. 1508)	<b>VA</b> 1500 (exc. 1508)
<b>B</b> 2100	<b>VB</b> 2100
<b>C</b> 2400	<b>VC</b> 2400
<b>D</b> 1508	<b>VD</b> 1508
<b>E</b> 2900 (1955)	<b>VE</b> 2900 (1955)

**B.** These two numbers indicate the year of the car.

**C.** This is one letter only, indicating where the car was assembled.

<b>A</b> - Atlanta, GA	<b>L</b> - Los Angeles, CA
<b>B</b> - Baltimore, MD	<b>N</b> - Norwood, OH
<b>F</b> - Flint, MI	<b>O</b> - Oakland, CA
<b>J</b> - Janesville, WI	<b>S</b> - St. Louis, MO
<b>K</b> - Kansas City, MO	<b>T</b> - Tarrytown, NY

**D.** The last sequence of numbers is the serial number of the car. At a given body plant this number was not duplicated. The 1955 and 1956 starting number was 1001 at each assembly plant. The 1957 starting number was 100001 at each assembly plant. Corvettes (2900 series) were numbered separately.

### THE COWL TAG

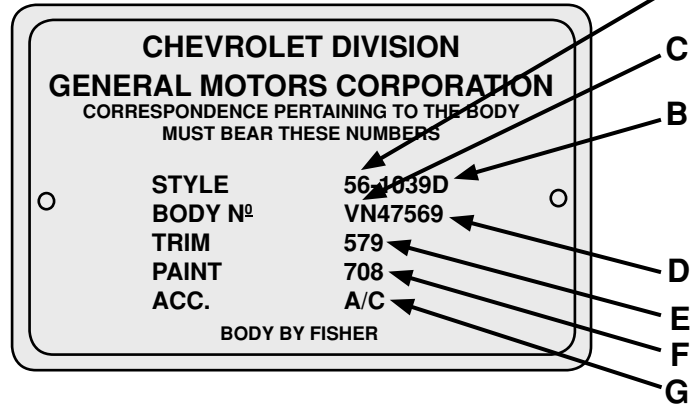
This aluminum plate is riveted to the cowl. On the 1955-56 cars it is found on the top of the firewall on the passenger side, except on 1955-56 air conditioned cars. The cowl tag on A/C cars can be found on the driver's side. The 1957 cowl tag can be found on the firewall in the engine compartment. There were two positions for the 1957 tag. For the first design, it is on the cowl toe panel; for the second design, it is located under the heater control valve.

**A.** These two numbers indicate the year of the car.

**B.** This number gives information for determining the model and series. It is a combination of numerals and, sometimes, letters. This number was assigned by the Fisher Body plant. See next page for model series chart.

**C.** This is either one or two letters, indicating which Fisher Body plant produced that body.

<b>A</b> - Atlanta, GA	<b>M</b> - Baltimore, MD
<b>CL</b> - Cleveland, OH	<b>N</b> - Norwood, OH
<b>F</b> - Flint, MI	<b>O</b> - Oakland, CA
<b>J</b> - Janesville, WI	<b>S</b> - St. Louis, MO
<b>K</b> - Kansas City, MO	<b>T</b> - Tarrytown, NY
<b>L</b> - Lansing, MI	<b>VN</b> - Van Nuys, CA



**D.** This sequence of numbers represents the numerical production at the Fisher Body plant. This is a non-duplicating number, beginning with '1', for the first body produced.

**E.** This set of three numbers represents the interior combination of fabric type and color. Refer to the Interior combinations charts beginning on page 249 thru 254 for a complete list of the combinations available in 1955, 1956 and 1957. This three digit number appears in the first column of each chart.

**F.** This set of three numbers, sometimes followed by a letter, represents the exterior paint combination. Please refer to the Paint Combination and Two-Tone Color Combination charts

on pages 252-254 for a complete list of the paint combinations available. This three digit number appears in the first column of each chart.

**G.** To the right of "ACC" are stamped letters that indicate the accessories installed at the factory. Not all accessories were indicated on the cowl tag, but major items, such as air conditioning, were. A partial list of the factory installed accessory codes includes:

<b>AC</b> - Air Conditioning
<b>CP</b> - Padded Dash
<b>EZI</b> - Tinted Glass
<b>SA</b> - Power Seats (Only)
<b>WA</b> - Power Windows (Only)
<b>WS</b> - Power Window and Seats

## 1955 ENGINE DATA AND POWER TEAMS

Engine	Models	Cubic Inch Disp.	Comp. Ratio	Bore	Stroke	Gross Horsepower	Net Horsepower	Fuel System	Transmission
Blue Flame 123 6 Cyl.	Passenger	235	7.5	3-9/16"	3-15/16"	123 @ 3800 RPM	109 @ 3600 RPM	Single Barrel	3-Speed Overdrive
Blue Flame 136 6 Cyl.	Passenger	235	7.5	3-9/16"	3-15/16"	136 @ 4200 RPM	121 @ 3800 RPM	Single Barrel	Powerglide
Turbo Fire V8	Passenger	265	8.0	3-3/4"	3"	162 @ 4400 RPM	137 @ 4000 RPM	Two Barrel	3-Speed Overdrive or Powerglide
Turbo Fire V8	Passenger	265	8.0	3-3/4"	3"	180 @ 4600 RPM	137 @ 4200 RPM	Four Barrel	3-Speed Overdrive or Powerglide

## 1956 ENGINE DATA AND POWER TEAMS

Engine	Models	Cubic Inch Disp.	Comp. Ratio	Bore	Stroke	Gross Horsepower	Net Horsepower	Fuel System	Transmission
Blue Flame 140 6 Cyl.	Passenger	235	8.0	3-9/16"	3-15/16"	140 @ 4200 RPM	125 @ 4000 RPM	Single Barrel	3-Speed Overdrive or Powerglide
Turbo Fire 162 V8	Passenger	265	8.0	3-3/4"	3"	162 @ 4400 RPM	137 @ 4000 RPM	Two Barrel	3-Speed Overdrive
Turbo Fire 170 V8	Passenger	265	8.0	3-3/4"	3"	170 @ 4400 RPM	141 @ 4000 RPM	Two Barrel	Powerglide
Turbo Fire 205 V8	Passenger	265	8.0	3-3/4"	3"	205 @ 4600 RPM	170 @ 4200 RPM	Four Barrel	3-Speed Overdrive or Powerglide
Turbo Fire 225 V8	Passenger	265	9.25	3-3/4"	3"	225 @ 5200 RPM	225 @ 4800 RPM	Dual Four Barrel	3-Speed Overdrive or Powerglide

## 1957 ENGINE DATA AND POWER TEAMS

Engine	Models	Cubic Inch Disp.	Comp. Ratio	Bore	Stroke	Gross Horsepower	Net Horsepower	Fuel System	Transmission
Blue Flame 140 6 Cyl.	Passenger	235	8.0	3-9/16"	3-15/16"	140 @ 4200 RPM	125 @ 4000 RPM	Single Barrel	3-Speed Overdrive or Powerglide
Turbo Fire 265 V8	Passenger	265	8.0	3-3/4"	3"	162 @ 4400 RPM	137 @ 4000 RPM	Two Barrel	3-Speed Overdrive
Turbo Fire 283 V8	Passenger	283	8.5	3-7/8"	3"	185 @ 4600 RPM	150 @ 4200 RPM	Two Barrel	Powerglide or Turboglide
Super Turbo Fire 283 V8	Passenger	283	9.5	3-7/8"	3"	220 @ 4800 RPM	190 @ 4600 RPM	Four Barrel	3-Speed Overdrive or P.G. or T.G.
Maximum Performance V8*	Passenger	283	9.5	3-7/8"	3"	245 @ 5000 RPM	215 @ 4800 RPM	Dual Four Barrel	3-Speed Close Ratio or P.G. or T.G.
Maximum Performance V8*	Passenger	283	9.5	3-7/8"	3"	250 @ 5000 RPM	225 @ 4800 RPM	Fuel Injection	3-Speed Close Ratio or P.G. or T.G.
Maximum Performance V8*	Passenger	283	9.5	3-7/8"	3"	270 @ 6000 RPM	230 @ 6000 RPM	Dual Four Barrel	3-Speed Close Ratio
Maximum Performance V8*	Passenger	283	10.5	3-7/8"	3"	283 @ 6200 RPM	240 @ 5600 RPM	Fuel Injection	3-Speed Close Ratio

All other engines have hydraulic valve lifters.

## 1955-57 MODEL SERIES

Series #	Model#	Description	Year	Series #	Model#	Description	Year	Series #	Model#	Description	Year
<b>Series A, Model One-Fifty</b>				<b>Series B, Model Two-Ten</b>				<b>Series C, Model Bel Air</b>			
1502	1211	2 Dr. Sedan	1955-57	2102	1011	2 Dr Sedan	1955-57	2402	1011D	2 Dr Sedan	1955-57
1503	1219	4 Dr. Sedan	1955-57	2103	1019	4 Dr Sedan	1955-57	2403	1019D	4 Dr Sedan	1955-57
1512	1211B	Utility Sedan	1955-57	2109	1062F	4 Dr 6 Psngr Wgn	1955-57	2409	1062DF	4 Dr 6 Psngr Wagon	1955, 57
1529	1263F	2 Dr., 6 Psngr Wgn	1955-57	2113	1039	4 Dr Ht Sport Sedan	1955-56	2413	1039D	4 Dr Ht Sport Sedan	1956-57
				2119	1062FC	4 Dr 9 Psngr Wagon	1956-57	2419	1062DF	4 Dr 9 Psngr Wagon	1956
				2124	1011A	Club Coupe (Del Ray)	1955-57	2429	1064DF	Nomad	1955-57
				2129	1063F	2 Dr 6 Psngr Wagon	1955-57	2434	1067D/or DTX	Convertible	1955-57
				2154	1037	2 Dr Sport Coupe	1955-57	2454	1037D	2 Dr Ht Sport Coupe	1955-57
<b>Series D, Model One-Fifty</b>											
1508	1271	Sedan Delivery	1955-57								

## 1955-57 ENGINE IDENTIFICATION CODES

### 1955 Engines

Engine Source Designation: F - Flint, T - Tonawanda  
 Model Year Designation: 55  
 Example: 0001065F55Y  
 This engine is the 65th 2400 series 6 cylinder built at the Flint plant, designed to be used with a powerglide transmission.

### 1956 Engines

Engine Source Designation: F - Flint, T - Tonawanda  
 Model Year Designation: 56  
 Example: 0001050T56GC  
 This engine is the 50th 2100 series 8 cylinder built at the Tonawanda plant, designed to be used with an overdrive equipped transmission.

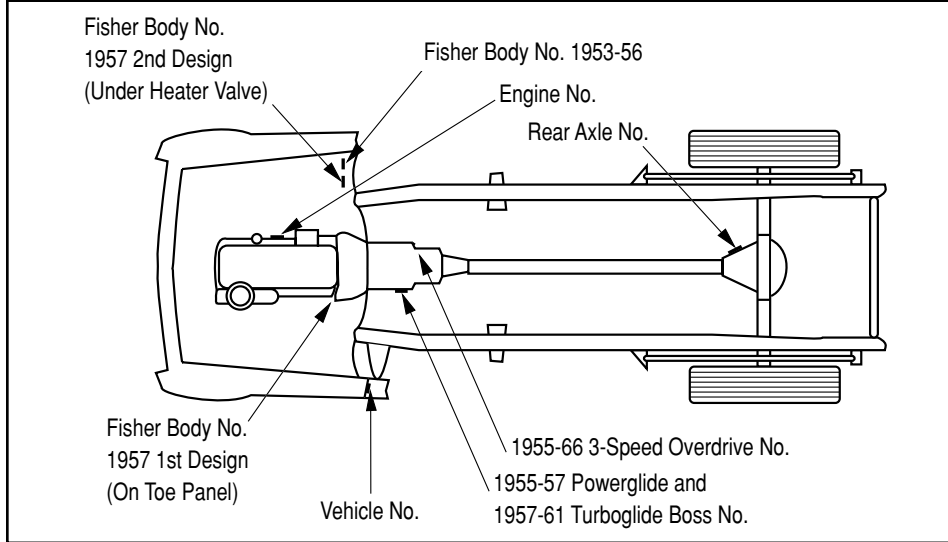
### 1957 Engines

Engine Source Designation: F - Flint, T - Tonawanda, C - Canada  
 Model Year Designation: 57  
 Example: F301A  
 The three or four digit number following the letter F, T, or C, designates the day and month the engine was produced. Example shown was produced March 1st. If it had been built Oct. 19, it would read F1019A.

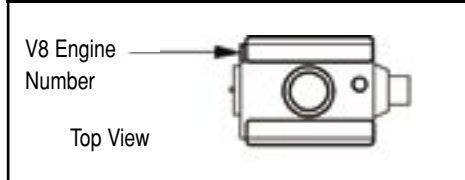
## EXCEPTIONS AND ABBREVIATIONS:

Please see page 250 for Interior Combination chart exceptions. See page 254 for the table listing all paint color abbreviations used in the Paint Combination and Two-Tone Color Combination charts.

## IDENTIFICATION TAG LOCATIONS



## ENGINE TAG LOCATION



## 55-58 PSNGR REAR AXLE I.D.

Series	Year	Transmission	Ratio	Detroit	Buffalo
Psngr	55-56	3-Speed	3.70:1	AA	BA
Psngr	55-56	Powerglide	3.55:1	AB	BB
Psngr	55-56	3-Speed O.D.	4.11:1	AC	BC
Psgr	1957	3-Speed	3.55:1	AA	BA
Psngr	1957	Automatics	3.36:1	AB	BB
Psngr	1957	3-Speed O.D.	4.11:1	AC	BC
Psngr	1957	3-Spd. w/ Posi.	3.55:1	AK	None
Psngr	1957	Auto. w/ Posi.	3.36:1	AM	None
Psngr	1957	3-Spd. O.D. w/Posi.	4.11:1	AL	None

Axle i.d. is stamped on differential carrier with date of manufacture.

## 55-57 CASTING & TAG NUMBERS

Year	Description	Number
<b>Engine Block</b>		
1955-57	6 Cyl. w/ Dual Hole Water Pump	3835911
1955-57	6 Cyl. w/ Dual Hole Water Pump	3733949
1955-57	6 Cyl. w/ Dual Hole Water Pump	3833949
1955-57	6 Cyl. w/ Single Hole Water Pump	3739716
1955-57	6 Cyl. w/ Single Hole Water Pump	3836233
1955-57	6 Cyl. w/ Single Hole Water Pump	3837004
1955	V8	3703524
1956	V8	3720991
1957	V8 265, 283	3731548

## 55-57 CASTING & TAG NUMBERS

Year	Description	Number
<b>Cylinder Heads</b>		
1955-57	6 Cyl.	3836848
1955	All V8 Engines	3703523
1955	Some 1955 2BC Engines	3837064
1956	V8 2BC	3837064
1956	V8 4BC	3725306
1956	V8 Dual 4BC	3731762
1957	V8 2BC	3731554
1957	V8 Dual 4BC, Fuel Injection	3731539
1957	V8 Dual 4BC, Fuel Injection	3740997
<b>Intake Manifold</b>		
1955	6 Cyl.	3835590
1956-57	6 Cyl.	3838822
1955	V8 2BC	3704790
1955	V8 4BC	3711348
1956	V8 2BC	3735444
1956	V8 4BC	3737109
1956	V8 Dual 4BC	3731394
1957	V8 2BC	3732880
1957	V8 4BC (Early number was 3731398)	3746829
1957	V8 Dual 4BC	3739653
1957	Fuel Injection	3741193
<b>Distributors</b>		
1955-57	All	1112403
1955	V8 w/ Standard Transmission	1110847
1956	V8 w/ Automatic Transmission	1110866
1956	V8 4BC	1110869
1956	V8 Dual 4BC	1110879
1957	V8 2BC	1110874
1957	V8 4BC	1110890
1957	V8 Dual 4BC	1110891

## 55-57 CASTING & TAG NUMBERS

Year	Description	Number
<b>Distributors (Cont.)</b>		
1957	V8 Fuel Injection (Early no. was 1110889)	1110905
1957	V8 w/ Single Point Ignition, Standard Cam	1110906
1957	V8 w/ Tach Drive	1110908
<b>Radiators</b>		
1955-56	6 Cyl. w/ Standard Transmission	3133042
1955-56	6 Cyl. w/ Automatic Transmission	3133043
1957	6 Cyl. w/ Standard Transmission	3136569
1957	6 Cyl. w/ Automatic Transmission	3136570
1955-57	V8 w/ Std. Trans. (also 3136157, 31360456)	3133044
1955-57	V8 w/ Auto. Trans. (also 3137077)	3136158
<b>Generators</b>		
1955-57	6 Cyl. w/o Power Steering	1100326
1955	V8 w/o Power Steering, 30 Amp.	1102005
1955	V8 w/ Power Steering, 30 Amp.	1102020
1956-57	V8 w/o Power Steering, 25 Amp.	1100321
1956-57	V8 w/o Power Steering, 30 Amp.	1102042
1956-57	V8 w/ Power Steering, 30 Amp.	1102041
1957	V8 w/o Pwr. Str. w/ Air Cond., 40 Amp.	1106981
<b>Starters</b>		
1955-56	6 Cyl.	1107644
1957	6 Cyl.	1107652
1955-56	V8	1107627
1957	V8	1107664
1957	V8 w/ Turboglide	1107694
<b>Exhaust Manifolds</b>		
1955-57	6 Cyl.	3835587
1955	V8 Passenger Side	3704792
1955	V8 Driver Side	3704791
1956	V8 Passenger Side	3836968
1956	V8 Driver Side	3837069
1956	V8 Dual 4BC, Passenger Side	3731558
1956	V8 Dual 4BC, Driver Side	3731557
1957	V8 Passenger Side	3733978
1957	V8 Driver Side	3733975
<b>Water Pumps</b>		
1955-56	V8	3704911
1957	V8	3736493
1955-57	6 Cyl., Second Design	3741033
<b>Harmonic Balancers</b>		
1955-57	V8	3836196
1955-57	6 Cyl.	3836160
<b>Carburetors</b>		
1955-57	6 Cyl., 1BC Carter	2008
1955-57	6 Cyl., 1BC Carter	2046
1955-57	6 Cyl., 1BC Carter	2101
1955	6 Cyl., 1BC Rochester	7007180
1955	6 Cyl., 1BC Rochester	7007181
1955	6 Cyl., 1BC Rochester	7009254

## 55-57 CASTING & TAG NUMBERS

Year	Description	Number
<b>Carburetors (Cont.)</b>		
1956	6 Cyl., 1BC Rochester	7009255
1957	6 Cyl., 1BC Rochester	7009656
1957	6 Cyl., 1BC Rochester	7009657
1955-56	V8, 2BC Carter (WGD)	2286
1955	V8, 2BC Rochester	7005810
1955	V8, 2BC Rochester	7006825
1955	V8, 2BC Rochester	7008004
1955	V8, 2BC Rochester	7008005
1955	V8, 2BC Rochester	7008387
1956	V8, 2BC Rochester	7008388
1957	V8, 2BC Rochester	7010647
1957	V8, 2BC Rochester	7010648
1957	V8, 2BC Rochester	7011224
1957	V8, 2BC Rochester	7011131
1955	V8, 4BC Carter (WCFB)	2218
1955	V8, 4BC Carter (WCFB)	2351
1956	V8, 4BC Carter (WCFB)	2366
1957	V8, 4BC Carter (WCFB)	2505
1957	V8, 4BC Carter (WCFB)	2555
1955-57	V8, Dual 4BC Carter, Front	2419
1955-57	V8, Dual 4BC Carter, Front	2613
1955-57	V8, Dual 4BC Carter, Front	2626
1955-57	V8, Dual 4BC Carter, Front	3181
1955-57	V8, Dual 4BC Carter, Front	3182
1955-57	V8, Dual 4BC Carter, Rear	2362
1955-57	V8, Dual 4BC Carter, Rear	2614
1955-57	V8, Dual 4BC Carter, Rear	2627
1956	V8, 4BC Rochester	7008737
1957	V8, 4BC Rochester	7009846
1957	V8, 4BC Rochester	7012126

## 1955-57 BELL HOUSING CASTING

Year	Description	Number
1955-57	V8 w/ Standard Transmission	3704922
1955-56	V8 w/ Powerglide	3836142
1957	V8 w/ Powerglide	3733365
1955-57	6 Cyl. w/ Powerglide	3836601
1955-57	6 Cyl. w/ Standard Transmission	3739586

## 1955 ENGINE IDENTIFICATION

Model	Drive Train Configuration	Serial # Suffix
15-21-2400	235 6 Cyl. w/ 3-Speed, Overdrive	Z
Taxi Cab	235 6 Cyl. w/ Heavy Duty Clutch	ZC
15-21-2400	235 6 Cyl. w/ Alum. Cam Gear	ZH
15-21-2400	235 6 Cyl. w/ Alum. Cam Gr., H. D. Cl.	ZJ
15-21-2400	235 6 Cyl. w/ Powerglide	Y
15-21-2400	265 V8 w/ 3-Speed	G

## 1955 ENGINE IDENTIFICATION (CONT.)

Model	Drive Train Configuration	Serial # Suffix
15-21-2400	265 V8 w/ Overdrive	GC
15-21-2400	265 V8 w/ 3-Speed, Air Conditioning	GF
15-21-2400	265 V8 w/ Overdrive, Air Conditioning	GQ
15-21-2400	265 V8 w/ Heavy Duty Clutch	GJ
15-21-2400	265 V8 w/ Heavy Duty Clutch, A/C	GK
15-21-2400	265 V8 w/ 4BC, 3-Spd., Dual Exhaust	GL
15-21-2400	265 V8 w/ 4BC, 3-Spd., Dual Exhaust, A/C	GM
15-21-2400	265 V8 w/ 4BC, O.D., Dual Exhaust	GE
15-21-2400	265 V8 w/ 4BC, O.D., A/C, Dual Exhaust	GN
15-21-2400	265 V8 w/ Powerglide	F
15-21-2400	265 V8 w/ 4BC, Powerglide, Dual Exhaust	FB
15-21-2400	265 V8 w/ Powerglide, A/C	FC
15-21-2400	265 V8 w/ 4BC, P.G., Dual Exhaust, A/C	FD
2900	235 6 Cyl. w/ Powerglide	YG
2900	265 V8 w/ Powerglide	FG
2900	265 V8 w/ 3-Speed	GR

## 1956 ENGINE IDENTIFICATION

Model	Drive Train Configuration	Serial # Suffix
15-21-2400	235 6 Cyl. w/ 3-Speed, Overdrive	Z
15-21-2400	235 6 Cyl. w/ Heavy Duty Clutch	ZC
15-21-2400	235 6 Cyl. w/ Powerglide	Y
15-21-2400	265 V8 w/ 3-Speed	G
15-21-2400	265 V8 w/ Overdrive	GC
15-21-2400	265 V8 w/ 4BC	GL
15-21-2400	265 V8 w/ Dual 4BC	GS
15-21-2400	265 V8 w/ Dual 4BC, Hi-Lift Cam	GT
15-21-2400	265 V8 w/ 4BC, Air Conditioning	GM
15-21-2400	265 V8 w/ Heavy Duty Clutch	GJ
15-21-2400	265 V8 w/ Heavy Duty Clutch, A/C	GK
15-21-2400	265 V8 w/ 4BC, Overdrive	GE
15-21-2400	265 V8 w/ 4BC, Overdrive, A/C	GN
15-21-2400	265 V8 w/ Powerglide	F
15-21-2400	265 V8 w/ 4BC, Powerglide	FB
15-21-2400	265 V8 w/ Dual 4BC, Powerglide	FH
15-21-2400	265 V8 w/ Air Conditioning	FC
15-21-2400	265 V8 w/ 4BC, A/C	FD
2900	265 V8 w/ 3-Speed	GV
2900	265 V8 w/ Dual 4BC, Hi-Lift Cam	GU
2900	265 V8 w/ Dual 4BC	GR
2900	265 V8 w/ Powerglide	FK
2900	265 V8 w/ Dual 4BC, Powerglide	FG

## 1957 ENGINE IDENTIFICATION

Model	Drive Train Configuration	Serial # Suffix
15-21-2400	235 6 Cyl. w/ 3-Speed, Overdrive	A
15-21-2400	235 6 Cyl. w/ Heavy Duty Clutch	AD
15-21-2400	235 6 Cyl. w/ Powerglide	B
15-21-2400	265 V8 w/ 3-Speed	C

## 1957 ENGINE IDENTIFICATION (CONT.)

Model	Drive Train Configuration	Serial # Suffix
15-21-2400	265 V8 w/ Overdrive	CD
15-21-2400	265 V8 w/ Heavy Duty Clutch	CE
15-21-2400	283 V8 w/ 4BC	E
15-21-2400	283 V8 w/ Dual 4BC	EA
15-21-2400	283 V8 w/ Dual 4BC w/ Hi-Lift Cam	EB
15-21-2400	283 V8 w/ Fuel Injection	EJ
15-21-2400	283 V8 w/ Fuel Injection, Hi Lift Cam	EK
15-21-2400	283 V8 w/ 4BC, Overdrive	EC
15-21-2400	283 V8 w/ Powerglide	F
15-21-2400	283 V8 w/ Powerglide, A/C	FA
15-21-2400	283 V8 w/ 4BC, Powerglide	FC
15-21-2400	283 V8 w/ Dual 4BC, Powerglide	FD
15-21-2400	283 V8 w/ Fuel Injection, Powerglide	FJ
15-21-2400	283 V8 w/ 4BC, Powerglide, A/C	FE
15-21-2400	283 V8 w/ Turboglide	G
15-21-2400	283 V8 w/ 4BC, Turboglide	GC
15-21-2400	283 V8 w/ Dual 4BC, Turboglide	GD
15-21-2400	283 V8 w/ Fuel Injection, Turboglide	GF
2900	283 V8 w/ 4BC, 3-Speed	EF
2900	283 V8 w/ Dual 4BC, Hi-Lift Cam	EG
2900	283 V8 w/ Dual 4BC	EH
2900	283 V8 w/ F.I., Hi-Lift Cam, A/C	EL
2900	283 V8 w/ Fuel Injection, Hi-Lift Cam	EN
2900	283 V8 w/ Fuel Injection	EM
2900	283 V8 w/ Dual 4BC, Powerglide	FG
2900	283 V8 w/ Powerglide	FH
2900	283 V8 w/ F.I., Powerglide	FK

## INTERIOR COMBINATIONS

This information pertains to the upholstery used on seats, door panels, headliners and convertible tops. The three-digit number in the first column of each chart corresponds to the "Trim" number found on the cowl tag.

## 1955 INTERIOR COMBINATIONS

#	Material Combination	Models
500	Light Gray Pattern Cloth (exc. Wgn., Sed. Del.)	1200
547	Light Gray Pattern Cloth w/ Black Vinyl	1211
506	Beige Vinyl w/ Light Blue Vinyl	1011A
507	Beige Vinyl w/ Light Green Vinyl	1011A
508	Ivory Vinyl w/ Black Vinyl	1011A
503	Dark Blue Gabardine w/ Light Blue Pat. Cloth	1011D-19-37
504	Dark Green Gabardine w/ Light Grn. Pat. Cloth	1011D-19-37
505	Dark Brown Gabardine w/ Light Tan Pat. Cloth	1011D-19-37
509	Lt. Blue Vinyl w/ Dk. Blue Pattern Cloth	1101D-19D
510	Light Green Vinyl w/ Dark Green Pat. Cloth	1101D-19D
511	Beige Vinyl w/ Dark Brown Pattern Cloth	1101D-19D

## 1955 INTERIOR COMBINATIONS

#	Material Combination	Models
513	Ivory Vinyl w/ Turquoise Pattern Cloth	1101D-19D
531	Coral Vinyl w/ Gray Pattern Cloth	1011D-19D
549	Ivory Vinyl w/ Dark Gray Pattern Cloth	1011D-19D
525	Beige Vinyl w/ Red Vinyl	1067D/DTX
526	Light Green Vinyl w/ Dark Green Vinyl	1067D/DTX
527	Light Blue Vinyl w/ Dark Blue Vinyl	1067D/DTX
528	Beige Vinyl w/ Brown Vinyl	1067D/DTX
533	Coral Vinyl w/ Dark Gray Vinyl	1067D/DTX
537	Ivory Vinyl w/ Turquoise Vinyl	1067D/DTX
551	Ivory Vinyl w/ Dark Gray Vinyl	1067D/DTX
519	Light Blue Vinyl w/ Straw Pattern Cloth	1037D
520	Light Green Vinyl w/ Straw Pattern Cloth	1037D
521	Red Vinyl w/ Straw Pattern Cloth	1037D
522	Turquoise Vinyl w/ Straw Pattern Cloth	1037D
532	Coral Vinyl w/ Gray Pattern Cloth	1037D
550	Ivory Vinyl w/ Gray Pattern Cloth	1037D
514	Beige Vinyl w/ Blue Ribbed Vinyl	1062F-63F
515	Light Green Vinyl w/ Dark Green Ribbed Vinyl	1062F-63F
516	Beige Vinyl w/ Brown Ribbed Vinyl	1062F-63F
517	Light Beige Vinyl w/ Straw Pattern Cloth	1062DF
518	Blue Vinyl w/ Straw Pattern Cloth	1062DF
502	Brown Vinyl w/ Straw Textured Vinyl	1263F
524	Light Green Vinyl w/ Dark Green Tex. Vinyl	1263F
501	Brown Vinyl w/ Straw Pattern Cloth	1271
541	Beige Vinyl w/ Green Waffle Pattern Vinyl	1064DF
542	Beige Vinyl w/ Blue Waffle Pattern Vinyl	1064DF
543	Beige Vinyl w/ Brown Waffle Pattern Vinyl	1064DF
544	Beige Vinyl w/ Red Waffle Pattern Vinyl	1064DF
545	Ivory Vinyl w/ Turquoise Waffle Pattern Vinyl	1064DF
546	Coral Vinyl w/ Gray Waffle Pattern Vinyl	1064DF
552	Ivory Vinyl w/ Gray Waffle Pattern Vinyl	1064DF

## 1956 INTERIOR COMBINATIONS

#	Material Combination	Models
560	Please see exception notes.	1200
567	Ivory Vinyl w/ Black Vinyl	1011A
568	Ivory Vinyl w/ Green Vinyl	1011A
569	Ivory Vinyl w/ Turquoise Vinyl	1011A
564	Starfrost Vinyl w/ Char. Gray Pattern Cloth	1011-19-37-39
565	Starfrost Vinyl w/ Green Pattern Cloth	1011-19-37-39
566	Starfrost Vinyl w/ Blue Pattern Cloth	1011-19-37-39
573	Ivory Vinyl w/ Charcoal Pattern Cloth	1011D-19D
574	Light Green Vinyl w/ Dark Green Pat. Cloth	1011D-19D
575	Light Blue Vinyl w/ Dark Blue Pattern Cloth	1011D-19D
577	Light Turquoise Vinyl w/ Dark Turq. Pat. Cloth	1011D-19D
578	Yellow Vinyl w/ Charcoal Pattern Cloth	1011D-19D
617	Tan Vinyl w/ Copper Pattern Cloth	1011D-19D
626	Cream Vinyl w/ Charcoal Pattern Cloth	1011D-19D

## 1956 INTERIOR COMBINATIONS

#	Material Combination	Models
602	Ivory Vinyl w/ Charcoal Pattern Vinyl	1067D/DTX
603	Ivory Vinyl w/ Dark Turquoise Pattern Vinyl	1067D/DTX
604	Yellow Vinyl w/ Charcoal Gray Pattern Vinyl	1067D/DTX
605	Ivory Vinyl w/ Red Pattern Vinyl	1067D/DTX
606	Light Green Vinyl w/ Dark Green Pattern Vinyl	1067D/DTX
607	Light Blue Vinyl w/ Dark Blue Pattern Vinyl	1067D/DTX
621	Tan Vinyl w/ Copper Pattern Vinyl	1067D/DTX
631	Cream Vinyl w/ Charcoal Pattern Vinyl	1067D/DTX
579	Ivory Vinyl w/ Charcoal Gray Pattern Cloth	1037D-39D
610	Ivory Vinyl w/ Charcoal Pattern Cloth	1062DF
629	Please see exception notes.	1062DF
630	Cream Vinyl w/ Charcoal & Yellow Pattern Cloth	1062DF
611	Ivory Vinyl w/ Charcoal Pattern Cloth	1064
632	Cream Vinyl w/ Charcoal & Yellow Pattern Cloth	1064
633	Red Vinyl w/ Red Taupe Pattern Cloth	1064
580	Light Green Vinyl w/ Med. Green Pattern Cloth	1037D-39D
590	Light Green Vinyl w/ Med. Green Pattern Cloth	1064
581	Light Blue Vinyl w/ Med. Blue Pattern Cloth	1037D-39D
591	Light Blue Vinyl w/ Light Blue Pattern Cloth	1064
627	Cream Vinyl w/ Char. Yellow Pattern Cloth	1037D-39D
628	Please see exception notes.	1039D
593	Red Vinyl w/ Red Pattern Cloth	1064
584	Lt. Turquoise Vinyl w/ Med. Turq. Pattern Cloth	1037D
587	Lt. Turquoise Vinyl w/ Med. Turq. Pattern Cloth	1062DF
594	Lt. Turquoise Vinyl w/ Med. Turq. Pattern Cloth	1064
585	Yellow Vinyl w/ Charcoal Pattern Cloth	1037D-39D
588	Yellow Vinyl w/ Charcoal Pattern Cloth	1062DF
595	Yellow Vinyl w/ Charcoal Pattern Cloth	1064
618	Copper Vinyl w/ Tan Pattern Cloth	1037D-39D
619	Copper Vinyl w/ Tan Pattern Cloth	1062DF
620	Copper Vinyl w/ Tan Pattern Cloth	1064
570	Starfrost Vinyl w/ Dark Green Pattern Vinyl	1062F-62FC-63F
572	Starfrost Vinyl w/ Dark Turq. Pattern Vinyl	1062F-62FC-63F
609	Starfrost Vinyl w/ Char. Gray Pattern Vinyl	1062F-62FC-63F
562	Gold Striped Vinyl w/ Green Vinyl	1263F
616	Gold Striped Vinyl w/ Charcoal Gray Vinyl	1263F
615	Gold Striped Vinyl w/ Charcoal Gray Vinyl	1271

## EXCEPTION NOTES FOR 1956 INTERIOR COMBINATIONS

The chart below lists the exceptions to the data found in the 1956 Interior Combination charts.

### 1956 INTERIOR COMBINATION EXCEP-

#	Material Combination	Models
560	Beige or Gold Vinyl w/ Gold Dot Black Cloth (Exc. Station Wagon & Sedan Delivery)	1200
628	Red Vinyl w/ Red Taupe Pattern Cloth (Replaces 583)	1039D
629	Red Vinyl w/ Red Taupe Pattern Cloth (Replaces 586)	1062DF

## 1957 INTERIOR COMBINATIONS

#	Material Combination	Models
650	Black Vinyl w/ Black & Gray Pattern Cloth	1211-11B-1219
651	Black Vinyl w/ Black & Gray Pattern Vinyl	1271
652	Black Vinyl w/ Black & Gray Pattern Vinyl	1263F
653	Med. Green Vinyl w/ Green & Gray Pat. Vinyl	1263F
654	Ivory Vinyl w/ Charcoal Pattern Cloth	1011-19-37-39
655	Lt. Green Vinyl w/ Med. Green Pattern Cloth	1011-19-37-39
656	Light Blue Vinyl w/ Med. Blue Pattern Cloth	1011-19-37-39
657	Ivory Vinyl w/ Charcoal Pattern Vinyl	1011A
658	Lt. Green Vinyl w/ Med. Green Pattern Vinyl	1011A
659	Copper Vinyl w/ Beige Pattern Vinyl	1011A
660	Ivory Vinyl w/ Charcoal Pattern Vinyl	1062F-63-62FC
661	Lt. Green Vinyl w/ Med. Green Pattern Vinyl	1062F-63-62FC
662	Beige Vinyl w/ Copper Pattern Vinyl	1062F-63-62FC
663	Silver Vinyl w/ Black & Silver Pattern Cloth	1011D-19D
664	Med. Green Vinyl w/ Black & Green Pat. Cloth	1011D-19D
665	Med. Blue Vinyl w/ Black & Blue Pattern Cloth	1011D-19D
666	Med. Turquoise Vinyl w/ Black & Turq. Cloth	1011D-19D
667	Beige Vinyl w/ Black & Copper Pattern Cloth	1011D-19D
668	Yellow Vinyl w/ Black & Yellow Pattern Cloth	1011D-19D
669	Red Vinyl w/ Black & Red Pattern Cloth	1011D-19D
670	Silver Vinyl w/ Black & Silver Pattern Cloth	1037D-39D
671	Med. Green Vinyl w/ Black & Dk. Green Cloth	1037D-39D
672	Med. Blue Vinyl w/ Black & Dk. Blue Cloth	1037D-39D
673	Med. Turq. Vinyl w/ Black & Turq. Pattern Cloth	1037D-39D
674	Beige Vinyl w/ Black & Copper Pattern Cloth	1037D-39D
675	Yellow Vinyl w/ Black & Yellow Pattern Cloth	1037D-39D
676	Red Vinyl w/ Black & Red Pattern Cloth	1037D-39D
677	Ivory Vinyl w/ Silver Pattern Vinyl	1067D
678	Lt. Green Vinyl w/ Med. Green Pattern Vinyl	1067D
679	Lt. Blue Vinyl w/ Med. Blue Pattern Vinyl	1067D
680	Ivory Vinyl w/ Med. Turquoise Pattern Vinyl	1067D
681	Beige Vinyl w/ Copper Pattern Vinyl	1067D
682	Yellow Vinyl w/ Silver Pattern Vinyl	1067D
683	Red Vinyl w/ Silver Pattern Vinyl	1067D
684	Silver Vinyl w/ Black & Silver Pattern Cloth	1062DF
685	Med. Green Vinyl w/ Black & Green Pat. Cloth	1062DF
686	Med. Blue Vinyl w/ Black & Dk. Blue Pat. Cloth	1062DF
687	Med. Turq. Vinyl w/ Black & Dk. Turq. Pat. Cloth	1062DF
688	Beige Vinyl w/ Black & Copper Pattern Cloth	1062DF
689	Yellow Vinyl w/ Black & Yellow Pattern Cloth	1062DF
690	Red Vinyl w/ Black & Red Pattern Cloth	1062DF
691	Silver Vinyl w/ Black & Silver Pattern Cloth	1064DF
692	Med. Grn. Vinyl w/ Black & Dk. Grn. Pat. Cloth	1064DF
693	Med. Blue Vinyl w/ Black & Dk. Blue Pat. Cloth	1064DF
694	Med. Turq. Vinyl w/ Black & Dk. Turq. Cloth	1064DF
695	Beige Vinyl w/ Black & Copper Pattern Cloth	1064DF
696	Yellow Vinyl w/ Black & Yellow Pattern Cloth	1064DF
697	Red Vinyl w/ Black & Red Vinyl Pattern Cloth	1064DF

# INTERIOR & PAINT COMBINATIONS

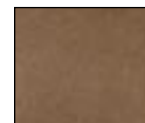
## 1955 PAINT COMBINATIONS

#	Model Usage Style Number	Body Color	Duco #	Wheel Color	Dulux #	Wheel Stripe	Duco #
585	1101-11A-19-1211-11B-19-71	Onyx Black	2532247	Onyx Black	505	Argent Silver	2894202
585	1101D-19D-37D-67D	Onyx Black	2532247	Onyx Black	505	None	None
586	1011-11A-19-1200 Series	Sea Mist Green	25357950	Sea Mist Green	670	Onyx Black	2532247
586	1011D-19D-67D	Sea Mist Green	25357950	Sea Mist Green	670	None	None
587	1011-11A-19-62F-63F-1200 Series	Neptune Green	28157951	Neptune Green	671	Argent Silver	2894202
587	1011-19D-37D-62DF	Neptune Green	28157951	Neptune Green	671	None	None
588	1011-11A-19-1211-11B-19-71	Skyline Blue	25358001	Skyline Blue	680	Onyx Black	2532247
588	1011D-19-D-67D	Skyline Blue	25358001	Skyline Blue	680	None	None
589	1011-11A-19-62F-63F-1211-11B-19-71	Glacier Blue	28157921	Glacier Blue	676	Argent Silver	2894202
589	1011-19D-37D-62DF	Glacier Blue	28157921	Glacier Blue	676	None	None
590	1011-19-1211-11B-19-71	Copper Maroon	28158099	Copper Maroon	678	Argent Silver	2894202
590	1011D-19D	Copper Maroon	28158099	Copper Maroon	678	None	None
591	1011-19-62F-63F-1211-11B-19	Shoreline Beige	25357602	Shoreline Biege	647	Onyx Black	2532247
591	Bel Air	Shoreline Beige	25357602	Shoreline Biege	647	None	None
592	1011-19-62F-63F-1211-11B-19-63F	Autumn Bronze	28158009	Autumn Bronze	672	Argent Silver	2894202
592	1067D	Autumn Bronze	28158009	Autumn Bronze	672	None	None
593	1011-11A-19-1211-11B-19-71	India Ivory	25358458	India Ivory	689	Onyx Black	2532247
593	1011D-19D	India Ivory	25358458	India Ivory	689	None	None
594	1011-19-1211-11B-19-71	Shadow Gray	28657631	Shadow Gray	654	Argent Silver	2894202
594	1011D-19D	Shadow Gray	28657631	Shadow Gray	654	None	None
596	Convertible	Gypsy Red	25357953	Gypsy Red	673	None	None
598	1062DF-67D	Regal Turquoise	28157955	Regal Turquoise	675	None	None
626	Convertible	Coral	25357990	Coral	679	None	None
630	Sport Coupe	Harvest Gold	25358456	Harvest Gold	698	None	None
683	1011-11A-19-1211-11B-19-71	Cashmere Blue	25358455	Cashmere Blue	699	Onyx Black	2532247
683	1011D-19D	Cashmere Blue	25358455	Cashmere Blue	699	None	None

## 1956 PAINT COMBINATIONS

#	Model Usage Style Number	Body Color	Duco #	Wheel Color	Dulux #	Wheel Stripe	Duco #
687	All Models	Onyx Black	2532247	Onyx Black	505	Argent Silver	2894202
688	150, 210 Series	Pincrest Green	25358897	Pincrest Green	716	Onyx Black	2532247
688	1011D-19D-37D-39D-62DF-67D	Pincrest Green	25358897	Pincrest Green	716	None	None
690	150, 210 Series	Sherwood Green	28659525	Sherwood Green	717	Argent Silver	2894202
690	1101D-19D-37D-39D-67D	Sherwood Green	28659525	Sherwood Green	717	None	None
691	150, 210 Series	Nassau Blue	25358752	Nassau Blue	718	Onyx Black	2532247
691	1011D-19D-37D-39D-62DF-67D	Nassau Blue	25358752	Nassau Blue	718	None	None
692	1011D-19-D-67D	Harbor Blue	28158812	Harbor Blue	719	Argent Silver	2894202
692	1011D-19D-37D-39D-62DF-67D	Harbor Blue	28158812	Harbor Blue	719	None	None
693	1011-11A-19-37-39	Dusk Plum	28159238	Dusk Plum	728	Onyx Black	2532247
693	1011D-19D-37D-39D-62DF-67D	Dusk Plum	28159238	Dusk Plum	728	None	None
694	150, 210 Series	India Ivory	25358458	India Ivory	689	Onyx Black	2532247
694	1011D-19D-37D-39D-62DF-67D	India Ivory	25358458	India Ivory	689	None	None
695	150 Series (exc. 1271), 210 Series	Crocus Yellow	25358763	Crocus Yellow	725	Onyx Black	2532247
695	1011D-19D-37D-39D-62DF-67D	Crocus Yellow	25358763	Crocus Yellow	725	None	None
697	150 Series (exc. 1263DF), 210 Series	Matador Red	25359446	Matador Red	738	Onyx Black	2532247
697	1011D-19D-37D-39D-62DF-67D	Matador Red	25359446	Matador Red	738	None	None
698	210 Series-1211-11B-19	Twilight Turquoise	25358920	Twilight Turquoise	723	Argent Silver	2894202
698	1011D-19D-37D-39D-62DF-67D	Twilight Turquoise	25358920	Twilight Turquoise	723	None	None

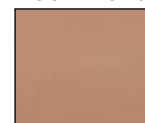
## 1955 Exterior Paints —Solids—



Autumn Bronze



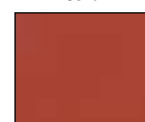
Copper Maroon



Coral



Glacier Blue



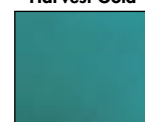
Gypsy Red



Harvest Gold



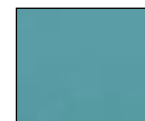
India Ivory



Neptune Green



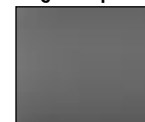
Onyx Black



Regal Turquoise



Sea-Mist Green



Shadow Gray



Shoreline Beige



Skyline Blue

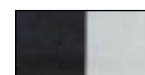
## 1955 Interior Fabrics



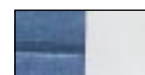
Bel Air Sedans  
Vinyl w/ Pattern Cloth  
(Shown in Ivory & Turquoise)



210 Sedans  
Gabardine w/ Pattern Cloth  
(Shown in Brown & Light Tan)



210 Delray Club Coupe  
Vinyl w/ Vinyl  
(Shown in Ivory & Black)



210 Station Wagons  
Vinyl w/ Ribbed Vinyl  
(Shown in Beige & Blue)



Bel Air Sport Coupe  
Vinyl w/ Pattern Cloth  
(Shown in Light Green & Straw Cloth)



150 Station Wagons  
Vinyl w/ Pattern Cloth  
or Textured Vinyl  
(Shown in Black & Gray Pattern Cloth)



Bel Air Convertibles  
Vinyl w/ Vinyl  
(Shown in Beige & Red)



Bel Air Station Wagons  
Vinyl w/ Pattern Cloth  
(Shown in Light Beige & Straw Cloth)

Please note: Printed samples may not match actual colors.

## 1956 Exterior Paints —Solids—



**Crocus Yellow**



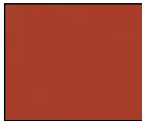
**Dusk Plum**



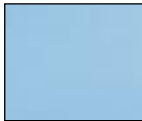
**Harbor Blue**



**India Ivory**



**Matador Red**



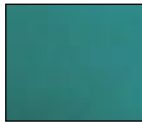
**Nassau Blue**



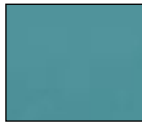
**Onyx Black**



**Pinecrest Green**



**Sherwood Green**



**Twilight Turquoise**

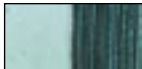
## 1956 Interior Fabrics



**Bel Air Sedans**  
Vinyl w/ Pattern Cloth  
(Shown in Ivory & Charcoal Gray)



**Bel Air Sport Coupe**  
Vinyl w/ Pattern Cloth  
(Shown in Ivory & Charcoal Gray)



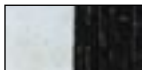
**Bel Air Sedans**  
Custom—Vinyl w/  
Pattern Cloth  
(Shown in Green)



**Bel Air Sport Coupe**  
Custom—Vinyl w/  
Pattern Cloth  
(Shown in Green)



**Bel Air Convertible**  
Vinyl w/ Pattern  
Vinyl (Shown in Tan & Copper)



**Nomad Station Wagons**  
Vinyl w/ Pattern Cloth  
(Shown in Ivory & Charcoal Gray)



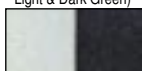
**Bel Air Convertible**  
Custom—Vinyl w/  
Pattern Vinyl  
(Shown in Ivory & Turq.)



**Nomad Station Wagons**  
Custom—Vinyl w/  
Pattern Cloth (Shown in Light & Dark Green)



**210 Sedans**  
Vinyl w/ Pattern Cloth  
(Shown in Starfrost & Charcoal Gray)



**210 Delray Club Coupe**  
Vinyl w/ Vinyl  
(Shown in Ivory & Black)



**210 Station Wagons**  
Vinyl w/ Pattern Vinyl  
(Shown in Starfrost & Charcoal Gray)



**150 Sedans & Station Wagons** Gold Stripe  
Vinyl w/ Vinyl (Shown in Beige & Green)

Please note: Printed samples may not match actual colors.

## 1956 PAINT COMBINATIONS (CONT.)

#	Model Usage Style Number	Body Color	Duco #	Wheel Color	Dulux #	Wheel Stripe	Duco #
749	150 Series (exc. 1271-63F), 210 Series	Tropical Turquoise	25359787	Tropical Turquoise	757	Argent Silver	2894202
749	Bel Air Series (exc. 1064DF)	Tropical Turquoise	25359787	Tropical Turquoise	757	None	None
750	150 Series (exc. 1271)	Calypso Cream	25390209	Calypso Cream	790	Onyx Black	2532247
752	210 Series	Inca Silver	8875603	Inca Silver	759	Onyx Black	2532247
752	Bel Air Series	Inca Silver	8875603	Inca Silver	759	None	None

## 1957 PAINT COMBINATIONS

#	Model Usage Style Number	Body Color	Duco #	Wheel Color	Dulux #
793	150, 210, Bel Air Series	Onyx Black	2532247	Onyx Black	505
794	150 (exc. 1529), 210, Bel Air Series (exc. 2409-29)	Imperial Ivory	88559931	Imperial Ivory	799
795	150, 210, Bel Air Series	Larkspur Blue	25390114	Larkspur Blue	808
796	150, 210, Bel Air Series	Harbor Blue	28158812	Harbor Blue	719
797	150, 210, Bel Air Series	Surf Green	25390147	Surf Green	807
798	150, 210, Bel Air Series	Highland Green	28659775	Highland Green	822
799	150 (exc. 1508), 210, Bel Air Series	Tropical Turquoise	25359787	Tropical Turquoise	757
800	150 (exc. 1508), 210, Bel Air Series	Colonial Cream	25358094	Colonial Cream	809
801	Bel Air Convertible	Canyon Coral	25390645	Canyon Coral	821
802	150, 210, Bel Air Series	Matador Red	25359446	Matador Red	738
803	Bel Air Convertible	Coronado Yellow	25390620	Coronado Yellow	819
804	210, Bel Air Series	Inca Silver	88756303	Inca Silver	759
805	2124-09-19-29, Bel Air Series	Sierra Gold	28659894	Sierra Gold	742
806	150 (exc. 1508), 210, Bel Air Series	Adobe Beige	25359895	Adobe Beige	760
821	Bel Air Convertible	Dusk Pearl	88790354	Dusk Pearl	812
823	Bel Air Convertible	Laurel Green	28190596	Laurel Green	806

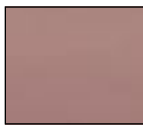
## 1955 TWO-TONE COMBINATIONS

#	Model Usage Style Number	Upr Body	Duco #	Lwr Body	Duco #	Wheel	Dulux #	Wheel Strp	Duco #
599	1011-19-62F-63F-1211-19-63F	S. Mist Grn.	25357950	Nept. Green	28157951	Nept. Green	671	Argent Silver	2894202
599	1011D-19D	S. Mist Grn.	25357950	Nept. Green	28157951	Nept. Green	671	None	
600	1011-19-1211-19	Skyline Blue	25358001	Glacier Blue	28147921	Glacier Blue	676	Argent Silver	2894202
600	1011D-19D	Skyline Blue	25358001	Glacier Blue	28147921	Glacier Blue	676	None	
601	Sport Coupe	Nept. Green	28157951	Shrin. Beige	25347602	Shrin. Beige	647	None	
602	1011-11A-19-1211-1219	India Ivory	25358458	Skyline Blue	25358001	Skyline Blue	680	Onyx Black	2532247
602	1011D-19D-37D	India Ivory	25358458	Skyline Blue	25358001	Skyline Blue	680	None	
603	1062F-63F	Aut. Bronze	28158009	Shrin. Beige	25357602	Shrin. Beige	647	Onyx Black	2532247
604	1062DF-67D	Nept. Green	28157951	S. Mist Grn.	25357950	S. Mist Grn.	670	None	
605	1011-11A-19	India Ivory	25358458	S. Mist Grn.	25357950	S. Mist Grn.	670	Onyx Black	2532247
606	1011-19-1263F	Shrin. Beige	25357602	Aut. Bronze	28158009	Aut. Bronze	672	Argent Silver	2894202
606	1011D-19D-37D-62DF	Shrin. Beige	25357602	Aut. Bronze	28158009	Aut. Bronze	672	None	
607	1011-11A-19	Glacier Blue	28157921	Shrin. Beige	25357602	Shrin. Beige	647	Onyx Black	2532247
608	1011A	India Ivory	25358458	Onyx Black	2532247	Onyx Black	505	Argent Silver	2894202
608	1011D-19D-37D-67D	India Ivory	25358458	Onyx Black	2532247	Onyx Black	505	None	
610	1062F-63F	Glacier Blue	28157921	Skyline Blue	25358001	Skyline Blue	680	Onyx Black	2532247
610	Convertible	Glacier Blue	28157921	Skyline Blue	25358001	Skyline Blue	680	None	
612	1011D-19D-37D-67D	India Ivory	28358458	Regal Turq.	28157955	Regal Turq.	675	None	
613	1011-19-1211-11B-19	Shrin. Beige	25357602	Nept. Green	28157951	Nept. Green	671	Argent Silver	2894202
613	1011D-19D-37D	Shrin. Beige	25357602	Nept. Green	28157951	Nept. Green	671	None	
614	1011-11A-19-62F-63F-1211-19	Shrin. Beige	25357602	Glacier Blue	28157921	Glacier Blue	676	Argent Silver	2894202

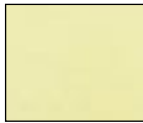
## 1957 Exterior Paints —Solids—



Adobe Beige



Canyon Coral



Colonial Cream



Coronado Yellow



Dusk Pearl



Harbor Blue



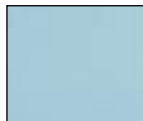
Highland Green



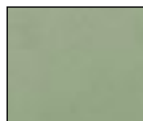
Imperial Ivory



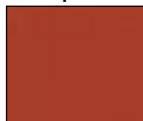
Inca Silver



Larkspur Blue



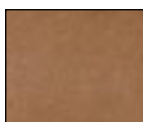
Laurel Green



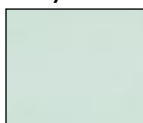
Matador Red



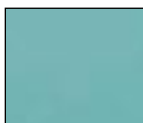
Onyx Black



Sierra Gold



Surf Green



Tropical Turquoise

## 1957 Interior Fabrics



**Bel Air Models**  
Vinyl w/ Pattern Cloth  
(Shown in Red & Black)



**Bel Air Convertible**  
Vinyl w/ Pattern  
Vinyl (Shown in Ivory &  
Turquoise)



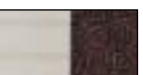
**210 Sedans**  
Vinyl w/ Pattern Cloth  
(Shown in Ivory &  
Charcoal)



**210 Delray Club Coupe**  
Vinyl w/ Pattern Vinyl  
(Shown in Ivory & Charcoal)



**150 Sedan Models**  
Vinyl w/ Pattern Cloth  
or Pattern Vinyl (Shown  
in Black & Black & Gray  
Cloth)



**210 Station Wagons**  
Vinyl w/ Pattern Cloth  
(Shown in Ivory & Copper)

Please note: Printed samples may not match actual colors.

## 1955 TWO-TONE COMBINATIONS (CONT)

#	Model Usage Style Number	Upr Body	Duco #						
614	1011D-19D-37D-62DF	Shrln. Beige	25357602	Glacier Blue	28157921	Glacier Blue	676	None	
615	1037D-62DF-67D	Shrln. Beige	25357602	Gypsy Red	25357953	Gypsy Red	673	None	
617	1011A	India Ivory	25358458	Gypsy Red	25357953	Gypsy Red	673	Argent Silver	2894202
624	1011-19-1211-11B-19	India Ivory	25358458	Shadow Gray	28657631	Shadow Gray	654	Argent Silver	2894202
624	1101D-19D	India Ivory	25358458	Shadow Gray	28657631	Shadow Gray	654	None	
627	1011D-19D-37D-64DF-67D	Shdw Gray	28657631	Coral	25357990	Coral	679	None	
628	1011A	Onyx Black	2532247	India Ivory	25358458	India Ivory	689	Onyx Black	2532247
628	1011D-19D-37D	Onyx Black	2532247	India Ivory	25358458	India Ivory	689	None	
629	Convertible	India Ivory	25358458	Coral	25357990	Coral	679	None	
631	1011A	India Ivory	25358458	Harv. Gold	25358456	Harv. Gold	698	Onyx Black	2532247
631	1011D-19D-37D-67D	India Ivory	25358458	Harv. Gold	25358456	Harv. Gold	698	None	
682	1011-11A-19-62F-63F-1211-19	India Ivory	25358458	Cash. Blue	25358455	Cash. Blue	699	Onyx Black	2532247
682	1011D-19D-37D-62DF-64DF-67D	India Ivory	25358458	Cash. Blue	25358455	Cash. Blue	699	None	
684	1011-19-62F-63F-1263F	India Ivory	25358458	Navajo Tan	28158457	Navajo Tan	700	Onyx Black	2532247
684	1011D-19D-37D-62DF-64DF-67D	India Ivory	25358458	Navajo Tan	28158457	Navajo Tan	700	None	
685	1011D-19D-37D-64DF-67D	India Ivory	25358458	Dusk Rose	28658459	Dusk Rose	690	None	

## 1956 TWO-TONE COMBINATIONS

#	Model Usage Style Number	Upr Body	Duco #	Lwr Body	Duco #	Wheel	Dulux #	Wheel Strp	Duco #
696	150, 210 Series	Crocus Yel.	25358763	Onyx Black	2532247	Crocus Yel.	725	Onyx Black	2532247
696	Bel Air Series	Crocus Yel.	25358763	Onyx Black	2532247	Crocus Yel.	725	None	
700	Bel Air Series	Sierra Gold	28659894	Adobe Beige	25359895	Sierra Gold	742	None	
701	150, 210 Series	India Ivory	25358458	Onyx Black	2532247	Onyx Black	505	Argent Silver	2894202
701	Bel Air Series	India Ivory	25358458	Onyx Black	2532247	Onyx Black	505	None	
702	150, 210 Series	Shrwd. Grn.	28659525	Pncrst. Grn.	25358897	Pncrst. Grn.	716	Onyx Black	2532247
702	Bel Air Series	Shrwd. Grn.	28659525	Pncrst. Grn.	25358897	Pncrst. Grn.	716	None	
703	1011-19-37-39	Harbor Blue	28158812	Nassau Blue	25358752	Harbor Blue	719	Argent Silver	2884202
703	Bel Air Series (exc. 1062DF)	Harbor Blue	28158812	Nassau Blue	25358752	Harbor Blue	719	None	
705	150, 210 Series	India Ivory	25358458	Pncrst. Grn.	25358897	Pncrst. Grn.	716	Onyx Black	2532247
705	Bel Air Series	India Ivory	25358458	Pncrst. Grn.	25358897	Pncrst. Grn.	716	None	
706	150, 210 Series	India Ivory	25358458	Shrwd. Grn.	28659525	Shrwd. Grn.	717	Argent Silver	2894202
706	Bel Air Series (exc. 1062DF)	India Ivory	25358458	Shrwd. Grn.	28659525	Shrwd. Grn.	717	None	
707	150, 210 Series	India Ivory	25358458	Nassau Blue	25358752	Nassau Blue	718	Onyx Black	2532247
707	Bel Air Series	India Ivory	25358458	Nassau Blue	25358752	Nassau Blue	718	None	
708	210 Series	India Ivory	25358458	Dusk Plum	28159238	Dusk Plum	728	Argent Silver	2894202
708	Bel Air Series	India Ivory	25358458	Dusk Plum	28159238	Dusk Plum	728	None	
710	210 Series	India Ivory	25358458	Twlight. Turq.	25358920	Twlight. Turq.	723	Argent Silver	2894202
710	Bel Air Series	India Ivory	25358458	Twlight. Turq.	25358920	Twlight. Turq.	723	None	
711	150, 210 Series	India Ivory	25358458	Matador Red	25359446	Matador Red	738	Onyx Black	2532247
711	1011D-19D-67D	India Ivory	25358458	Matador Red	25359446	Matador Red	738	None	
715	1037D-39D-62DF-64DF	Matador Red	25359446	Dune Beige	25359144	Matador Red	738	None	
717	210 Series	Crocus Yel.	25358763	Laurel Grn.	28159423	Laurel Grn.	730	Argent Silver	2894202
717	Bel Air Series	Crocus Yel.	25358763	Laurel Grn.	28159423	Laurel Grn.	730	None	
721	210 Series (exc. 1011A)	India Ivory	25358458	Dawn Gray	28159692	Dawn Gray	755	Onyx Black	2532247
721	Bel Air Series	India Ivory	25358458	Dawn Gray	28159692	Dawn Gray	755	None	
754	210 Series	India Ivory	25358458	Trop. Turq.	25359789	Trop. Turq.	757	Argent Silver	2894202
754	Bel Air Series	India Ivory	25358458	Trop. Turq.	25359789	Trop. Turq.	757	None	
755	150 Series	Calypso Cr.	25358458	Onyx Black	2532247	Calypso Cr.	790	Onyx Black	2532247



## 1956 TWO-TONE COLOR COMBINATIONS (CONT)

#	Model Usage Style Number	Upr Body	Duco #	Lwr Body	Duco #	Wheel	Dulux #	Wheel Strp	Duco #
756	150, 210 Series (exc. 1271)	Grecian Gold	28190317	Calypso Cr.	25390209	Grecian Gold	794	Onyx Black	2532247
756	Bel Air Series	Grecian Gold	28190317	Calypso Cr.	25390209	Calypso Cr.	790	None	
757	210 Series	Inca Silver	88756303	Imperial Ivory	88559931	Imperial Ivory	799	Onyx Black	2532247
757	Bel Air Series	Inca Silver	88756303	Imperial Ivory	88559931	Inca Silver	759	None	
763	1039D-1062DF-1037D	Matador Red	2539446	Adobe Beige	25359895	Matador Red	738	None	

## 1957 TWO-TONE COLOR COMBINATIONS

#	Model Usage Style Number	Upr Body	Duco #	Lwr Body	Duco #	Wheel Color	Dulux #
807	150 (exc. 1508), 210, B/A (exc. Conv.)	India Ivory	25358458	Onyx Black	2532247	Onyx Black	505
808	150 (exc. 1508), 210, B/A (exc. Conv.)	Imperial Ivory	88559931	Inca Silver	88756303	Inca Silver	759
809	150 (exc. 1508), B/A (exc. Conv.)	-----	-----	Harbor Blue	28158812	Harbor Blue	719
809	210	Harbor Blue	28158812	Larkspur Blue	25390114	Larkspur Blue	808
810	150 (exc. 1508), 210, B/A (exc. Conv.)	India Ivory	25358458	Larkspur Blue	25390114	Larkspur Blue	808
811	150 (exc. 1508), 210, B/A (exc. Conv.)	India Ivory	25358458	Trop. Turq.	25359787	Trop. Turq.	757
812	150 (exc. 1508)	-----	-----	Surf Green	25390147	Surf Green	807
812	210	Surf Green	25390147	Highland Grn.	28859775	Surf Green	807
812	Bel Air (exc. Conv.)	Surf Green	25390147	Highland Grn.	28859775	Highland Green	822
813	150 (exc. 1508), B/A (exc. Conv.)	India Ivory	25358458	Surf Green	25390147	Surf Green	807
814	210, Bel Air (exc. Conv.)	India Ivory	25358458	Coronado Yl.	25390620	Coronado Yl.	819
815	150 (exc. 1508), 210, B/A (exc. Conv.)	-----	-----	Colonial Cr.	25358094	Colonial Cr.	809
815	210	Colonial Cr.	25358094	Onyx Black	2532247	Onyx Black	505
816	150 (exc. 1508), B/A (exc. Conv.)	-----	-----	Colonial Cr.	25358094	Colonial Cr.	809
816	210	Colonial Cr.	25358094	India Ivory	25358458	Colonial Cr.	809
817	210, Bel Air (exc. Conv.)	India Ivory	25358458	Cryn. Coral	25390645	Cryn. Coral	821
818	2124-09-19-29, B/A (exc. Conv.)	Adobe Beige	25359895	Sierra Gold	28659446	Sierra Gold	742
819	150 (exc. 1508), 210, B/A (exc. Conv.)	India Ivory	25358458	Matador Red	25359446	Matador Red	738
820	210	Colonial Cr.	25358094	Laurel Grn.	28190596	Colonial Cr.	809
820	Bel Air (exc. Conv.)	-----	-----	Laurel Grn.	28190596	Laurel Grn.	806
822	210	Dusk Pearl	88790354	Imperial Ivory	88559931	Dusk Pearl	812
822	Bel Air (exc. Conv.)	-----	-----	Dusk Pearl	88790354	Dusk Pearl	812

## PAINT COMBINATION ABBREVIATIONS

Listed below are the exterior paint combinations used on the 1955-1956-1957 Chevys. These numbers correspond with the paint number on the cowl tag. Duco is acrylic lacquer. Dulux is acrylic enamel.

Adobe Bge..... Adobe Beige  
 Aut. Bronze..... Autumn Bronze  
 Calypso Cr..... Calypso Cream  
 Cryn. Coral..... Canyon Coral  
 Cash. Blue..... Cashmere Blue  
 Colonial Cr..... Colonial Cream  
 Coronado Yl..... Coronado Yellow  
 Crocus Yel..... Crocus Yellow  
 Grecian Gld..... Grecian Gold  
 Imp. Ivory..... Imperial Ivory  
 Harv. Gold..... Harvest Gold  
 Highland Grn..... Highland Green  
 Hrbr. Blue..... Harbor Blue  
 Laurel Grn..... Laurel Green  
 Matador Rd..... Matador Red  
 Pncrst. Grn..... Pinecrest Green  
 Regal Turq..... Regal Turquoise  
 S. Mist Grn..... Sea Mist Green  
 Shdw. Gray..... Shadow Gray  
 Shrd. Grn..... Sherwood Green  
 Shrln. Beige..... Shoreline Beige  
 Trop. Turq..... Tropical Turquoise  
 Twlght. Turq..... Twilight Turquoise